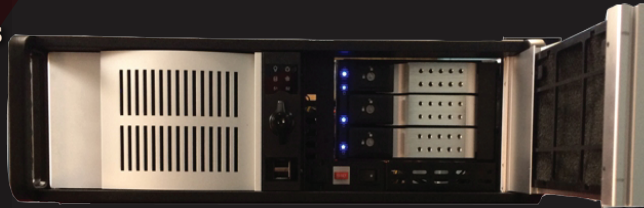


16 Channel Hybrid Embedded DVR

- Windows Embedded System
- Full Hybrid Support (Analog and IP)
- Supports 60+ brands of IP cameras
- Supports up to 80 megapixels
- POS Integration
- Inclusion of all Software Features

3U Rack Mountable



Incredible IP performance in a 16-CH hybrid security DVR packed with the latest features for dependable and durable security deployments

IP Performance Matters

The 16 Ch. Hybrid DVR is not only compatible with both analog and IP cameras, but the system is designed to **process massive amounts of video** with extreme power and precision to deliver every meticulous surveillance detail. So there are no jumps, bumps or lags.



Software Matters

Seamless network integration, intuitive video intelligence, powerful Visual and Intelligent search features, comprehensive remote and alarm management and more, the 16 Ch. Hybrid DVR is built for power, precision and performance.



Data Safety Matters

The 16 Ch. Hybrid DVR includes our Remote Backup tool that pulls data off the DVRs database and stores the information at a remote location. The system can also be pre-configured for specific time intervals to archive and pull data off.



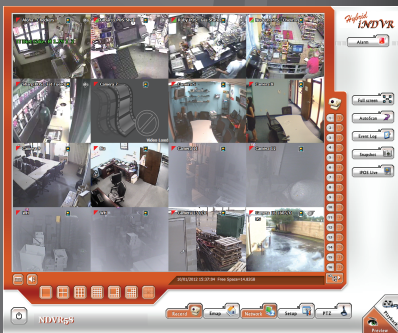
POS Matters

When deploying surveillance in retail facilities, **loss prevention** becomes critical. When cash registers are part of the every day work week, you will be happy to know that the 16 Ch. Hybrid DVR is compatible with most commonly used POS systems. Not only does this smart system actively associate transaction data with corresponding video images, but it also outputs alerts for suspicious events based on your assigned keywords.



Contact Us:

www.iLinkPro.com
(678) 206-5465
Sales@iLinkPro.com



16 Channel Hybrid Embedded DVR Detailed Specifications

Front Panel Connections			
Front panel controls	Power switch, 3 Removeable HDD		
DVD writer	Included, supported medias: DVD±R, DVD±RW		
USB 2.0 Port	2		
Rear Panel Connections			
Video Inputs (analog)	16 - BNC connectors		
Video Inputs (IP)	16 video H.264/MPEG4/JPEG data streams		
Video Output	1 - VGA out, 1 - DVI/HDMI out, 1 - TV out		
Audio Input/Output	16/1		
Microphone Input	1		
Alarm Inputs/Relay Outputs	4/4		
E-SATA Port	1		
USB 2.0 Port	4		
USB 3.0 Port	2		
AC Power	450 Watt or higher		
Unit			
Operating system	On DOM Windows 7 Pro 64bit		
Compression (analog)	Software: H.264/MPEG4/MJPEG		
Video Format	Analog	NTSC: 352 x 240 (CIF), 640 x 480 (VGA), 720 x 480 (D1)	
	IP	IP/Megapixel Camera Specific	
Recording Rates	Analog	CIF	480fps
		VGA	240fps
		D1	160fps
	IP	Per camera specifications	
Storage	Capacity	Supports up to 5 SATA HDDs (2 Internal, 3 Removable)	
Network	1, 10/100/1000 Base-T Ethernet, RJ-45		
Supported IP cameras (support IP PTZ, IP IO, & IP audio if IP cameras built-in)	AXIS, Panasonic, SONY, Arecont, Mobotix, BOSCH, IQinvision, JVC, TOSHIBA, VIVOTEK, ACTI, D-Link, PIXORD, PELCO, Apron, Lilin and more		
Operator Interface	USB mouse, USB PC keyboard		
Browser/Remote Client	Internet Explorer 6+, Windows 2000, XP, VISTA, 7		
Mechanical			
Dimensions (H x W x D)	Tower 16.46 x 7.32 x 18.9"	5.23x18.97x20.82	
Rack Mountable	Optional rack ears		

Software		
Interface	Graphical User Interface	
Account Administration	Up to 256 accounts with configurable user privileges	
Camera Administration	Add and configure all supported IP/Megapixel cameras through the GUI.	
PTZ Control	Zoom-in/Zoom-out, Focus-in/Focus-out, Direction, Speed, Preset point, Autopan	
Playback Administration	Playback while recording or setup	
	Play, rewind, fast-forward, frame-by-frame control	
	Digitally zoom to specific regions in recorded video	
	Export single frame to .jpg, export video clip to .DVR/ .AVI/.MPEG	
Motion Detection	Configurable to sense mass/motion; can partition off areas in monitoring regions from motion triggers	
Event Recording	Scheduled, Continuous, Smart, Motion, Alarm, Manual	
Video Event Search	Visual Search, date/time, camera, event & log files	
Advanced Event Log	Full event, operation, system & network activities log	
Alarm Notifications	Launch or send E-map, relay, video capture, CM3000 or E-mail notification	
E-map Display	Positions of cameras, sensors, relays & event status	
iEnhance	Enhance video quality such as Brightness/Contrast/ Hue/ Saturation/ Sharpness/ Noise Reduction/De-interlace/ Gray Scale of recorded video	
iStable	One-click fix for shaky video caused by camera movement (such as wind or vandalism)	
Remote Management		
Central Management	CM3000 software - supports up to 1000 DVRs	
Remote DVR connectivity	WebViewer (MS Internet Explorer only), Remote Console, JavaViewer, PDAViewer, iViewer(iPhone/iPad/iPod Touch/ Android)	
Dispatch Server	Balance NVR communication for added client access and greater data transfer speeds	
DDNS	Allow remote clients to search dynamic servers without enquiring for server's IP address	
Environmental		
Temperature	Operating	32 ° to 104 °F
	Storage	-22°F to 140 °F
Relative humidity	Operating	50%-80%
	Stored	90%
Regulatory		
Emissions	FCC: Part 15, Class A	
Warranty		
1 Year Limited Parts and Labor		

