

Sony IP License Plate Recognition 6-60mm Varifocal Lens IP Camera



Specifications

Model	iMPIRVFLPR-1080SN
Camera	
Image Sensor	1/2.8" 2.0 Megapixel Sony307 CMOS Sensor starlight
Effective Pixels	1920(H) x 1080(V)
Scanning System	Progressive
Electronic Shutter Speed	Auto/Manual, 1/3(4)~1/100000s
Min. Illumination	0.01Lux/F1.4(Color); 0Lux/F1.4(white on) More than 50dB
S/N Ratio	0.01Lux/F1.4(Color); 0Lux/F1.4(white on) More than 50dB
Camera Features	
Night Vision	6pcs 3W high power white LED
Day/Night	Full Color
Backlight Compensation	BLC / HLC / WDR(120dB)
Image Setting	Compression, Brightness, Contrast, Mirroring, Sharpness, AWB, AES, AGC, BLC, Day/Night mode, WDR, Privacy Masking, Sunny/Night/Outdoor/Customized mode, HLC.
White Balance	Auto/Sunny/Night/Outdoor/Customized
Gain Control	Auto/Manual
Noise Reduction	3D
Privacy Masking	Up to 4 areas
Lens	
Focal Length	6mm~60mm Varifocal Manual/ other lens optional
Max Aperture	F1.4
Focus Control	manual
Angle of View	H: 52°~6°
Mount Type	Board-in Type
Video	
Compression	H.265/H.264/ MJPEG
Resolution	1080P(1920x1080)/1.3M(1280x960)/720P(1280x720)/D1(704x576/704x480)/CIF(352x288/352x240)
Multi-stream	Triple Streaming (3 Independent Streams)
Frame Rate	1080P/720P(1~25/30fps)
Bit Rate	32K bps~10Mbps
Network	
Ethernet	RJ-45 (10/100Base-T)
Security	Password, IP Address Filtering, User Privileges
Protocol	IPv4, HTTP, HTTPS, SSL, TCP/IP, UDP, UPnP, ICMP, IGMP, SNMP, RTSP, RTP, RTCP, SMTP, NTP, DHCP, DNS, PPPOE, DDNS, FTP, IP Filter, QoS, Bonjour, PSS/web Client, ARP, 802.1x
ONVIF	ONVIF
Max. User Access	6users
Smart Phone	iPhone, iPad, Android, Windows Phone
General	
Power Supply	DC12V/2a
Power Consumption	<11.5W (with IR on, motorized lens working)
Working Environment	, Less than 95% RH
Ingress Protection	IP66
Housing	Metal Body (Aluminum)
Vandal Resistance	Yes
Dimensions	390mm x 160mm x 155mm
Weight	4lbs

Motorized Lens



Wide Angle



Adjusting



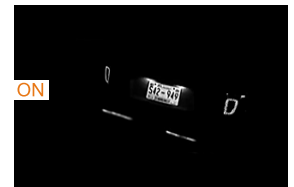
See Details

Multi-function

License Plate Recognition



OFF

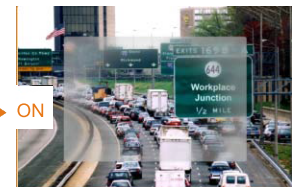


ON

Defog



OFF



ON

DWDR



OFF



ON