



5MP



The Small Window Takes You To A Safe, Convenient Digital World & Perfect Life!

Rear side



iHVR16HD-5MP

Specification

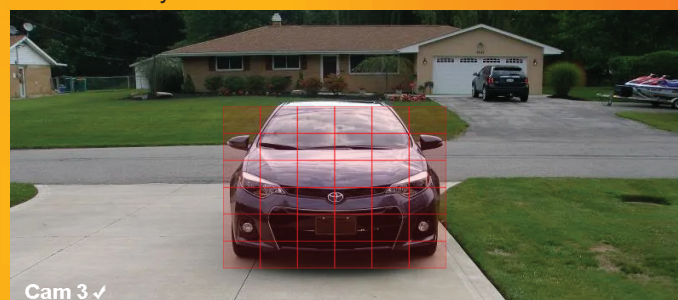
Model	iHVR16HD-5MP	
System	Main processor	Industrial grade embedded micro controller chip Huawei HIS chipset
	Operating system	Embedded LINUX operating system
	System resource	Multi-channel real-time recording synchronously, multi-channel real-time playback, multi-channel multi-user network operation, USB back up.
Display	Operation interface	16 bit real color GUI interface support mouse operation
	Display screen	(Take all analog input as an example, others are depended on the selected channel mode) 1/4 screen
Video	Image encode	H.264(High Profile)
	Monitor quality	VGA : 1080P ; HDMI : 4K
	Playback quality	8*5M@11fps / 8*4M@15fps / 8*3M@18fps / 8*1080P @25fps
	Encode capability	16*5M@11fps / 16*4M@15fps / 16*3M@18fps / 16*1080P @25fps
	Decode capability	16*5M@11fps / 16*4M@15fps / 16*3M@18fps / 16*1080P @25fps
	Multi Mode Input & Playback Channels	Pure Analog: 16*AHD-5MP 8 Playback
		Mixed Analog/IP: 4*AHD-5MP (analog) + 4*5MP (IP) 4 Playback
		Pure IP: 32*1080p 8 Playback, 16*3MP (IP) 8 Playback, 8*5MP (IP) 4 Playback
	Multi-mode video input	DVR mode : 16*5M/16*4M/16*3M/16*1080P
		HVR mode: 8*3M+8*3M NVR mode: 8*1080P+8*960P/8*3M/4*5M
Audio	Motion detection	Each channel can set 192 (16*12) detection area ; can set multi-level of flexibility (for local analog channel only)
	Support camera	AHD, CVI, TVI, IPC, 960H
Record and playback	Audio compression	G.711A
	Record mode	Manual, alarm, motion detection, timing
	Local playback	1-4ch playback synchronously; Under the mode of DVR, Max support 4CH AHD 1080P playback synchronously
Storage and back up	Video search	Time, date, event, channel search
	Space occupation	Video : 4M 70G~80G /day*channel ; 3M 50~60G/day*channel ; 1080P 30~40G/day*channel ; 960P 20~30G /day*channel
	Video storage	audio : 691.2M/day*channel Local HDD , Network
	Back up mode	Network backup, USB portable HDD, USB DVD-RW
Interface	Video input	4CH BNC
	Video output	1CH VGA, 1CH HDMI
	Audio input	16CH RCA
	Audio output	1CH RCA
	Alarm input	16CH
	Alarm output	2CH
	Network port	RJ45 10M/100M/1000M self-adaptive Ethernet port
	PTZ control	1 RS485 ; support multi kinds of PTZ Protocol
	USB port	2*USB2.0
	HDD port	4 SATA (each max support 6TB)
Other	Wireless port	3G, WIFI(extension via USB port)
	Tour	Yes
	Remote controller	Yes
	Power	12V/6A
Dimension	Dimension	430(Length) x366(Width) x77(Height)mm

5MP provides the viewer with an image that has 2.4 times as many pixels as 1080p resolution.



Motion Detection

Have your DVR/XVR set to instantly send alert notifications to your email when motion is detected.



Cam 3 ✓

Remote Access

Remote monitoring over the internet through app by iPhone, iPad, Android, or by IP Address from Windows computers.

