



5MP



The Small Window Takes You To A Safe, Convenient Digital World & Perfect Life!

Rear side



iHVR8HD-5MP



Specification

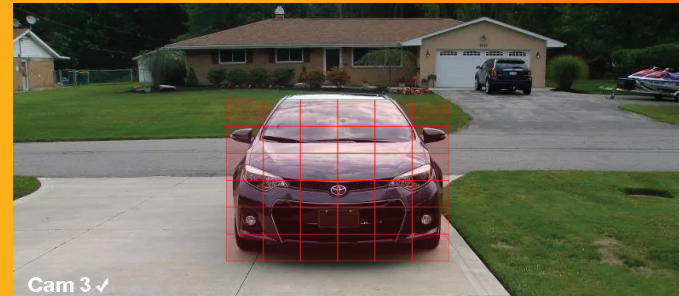
Model		iHVR8HD-5MP	
System	Main processor	Industrial grade embedded micro controller chip Huawei HIS chipset	
	Operating system	Embedded LINUX operating system	
	System resource	Multi-channel real-time recording synchronously, multi-channel real-time playback, multi-channel multi-user network operation, USB back up.	
Display	Operation interface	16 bit real color GUI interface support mouse operation	
	Displays screen	(Take all analog input as an example, others are depended on the selected channel mode) 1/8 screen	
Video	Image encode	H.264(High Profile)	
	Monitor quality	VGA : 1080P ; HDMI : 4K	
	Playback quality	8*5M@11fps / 8*4M@15fps / 8*3M@18fps / 8*1080P @25fps	
	Encode capability	8*5M@11fps / 8*4M@15fps / 8*3M@18fps / 8*1080P @25fps	
	Decode capability	8*5M@11fps / 8*4M@15fps / 8*3M@18fps / 8*1080P @25fps	
	Multi Mode Input & Playback Channels		Pure Analog: 8*AHD-5MP - 4 Playback
			Mixed Analog/IP: 4*AHD-5MP (analog) + 4*5MP (IP) - 4 Playback
Multi-mode video input		Pure IP: 8*3MP - 8 Playback, 4*5MP (IP) - 4 Playback	
		DVR mode : 8*5M / 8*4M / 8*3M / 8*1080P	
		HVR mode : 4*3M+4*3M	
Motion detection		NVR mode : 8*1080P+8*960P / 8*3M / 4*5M	
		Each channel can set 192 (16*12) detection area ; can set multi-level of flexibility (for local analog channel only)	
		Support camera AHD、CVI、TVI、IPC、960H	
Audio	Audio compression	G.711A	
Record and playback	Record mode	Manual, alarm, motion detection, timing	
	Local playback	1-8ch playback synchronously, Under the mode of DVR, Max support 8CH AHD 1080P playback synchronously	
	Video search	Time, date, event, channel search	
Storage and back up	Space occupation	Video : 4M 70G~80G /day/channel ; 3M 50~60G/day/channel ; 1080P 30~40G/day/channel ; 960P 20~30G /day/channel audio : 691.2M/day/channel	
	Video storage	Local HDD , Network	
	Back up mode	Network backup, USB portable HDD, USB DVD-RW	
Interface	Video input	8CH BNC	
	Video output	1CH VGA, 1CH HDMI	
	Audio input	4CH RCA	
	Audio output	1CH RCA	
	Alarm input	NO	
	Alarm output	NO	
	Network port	RJ45 10M/100M self-adaptive Ethernet port	
	PTZ control	1 RS485 ; support multi kinds of PTZ Protocol	
	USB port	2*USB2.0	
	HDD port	1 SATA (max support 6TB)	
Other	Wireless port	3G、WIFI(extension via USB port)	
	Tour	Yes	
	Remote controller	Yes	
	Power	12V/2A	
Dimension		260(Length) x234(Width) x47(Height)mm	

5MP provides the viewer with an image that has 2.4 times as many pixels as 1080p resolution.



Motion Detection

Have your DVR/XVR set to instantly send alert notifications to your email when motion is detected.



Remote Access

Remote monitoring over the internet through app by iPhone, iPad, Android, or by IP Address from Windows computers.



5MP 4 in 1 Sony Dome Camera

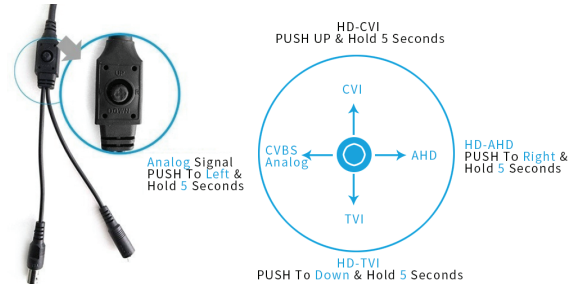
HD Analog Signal AHD, TVI, CVI, CVBS switch by OSD



Specifications

Model NO.	iHDIRDFIO-5SN
Video Output Mode	AHD/TVI/CVI 5M@25fps; CVBS 960H
Camera	
Image Sensor	SONY Starvis IMX335
Image Resolution	5.0 MP
Effective Pixels	5M:2592*1944
TV System	PAL/NTSC
Video Output Mode	AHD/TVI/CVI 5M@25fps; CVBS 960H
Electronic Shutter	1/25s~1/50,000s , 1/30s~1/60,000s
S/N Ratio	≥50dB
Scanning System	Progressive Scan
Lens	
Focus Length	Board Lens 3.6mm
Focus Control	Fixed
Lens Type	Fixed
Pixels	5M Pixels
Auto Iris Support	N/A
Night Vision	
Infrared LED	42μ x 1PCS
Infrared Distance	20M
IR Status	Under 10 Lux by CDS
IR Power On	CDS Auto Control
Camera Features	
Starlight	/
Day/Night	YES
OSD Menu Language	YES
White Balance	AUTO / MANUAL
Gain Control	AUTO
Noise Reduction	DNR
Picture TVjustment	YES
WDR	DWDR
OSD Support	YES
Dip Switch	N/A
General	
Waterproof	N/A
Dual Voltage	N/A
IR Cut Filter	YES
Heater	N/A
Audio	N/A
Operation Temperature	-10°C ~ +50°C RH95% Max
Storage Temperature	-20°C ~ +60°C RH95% Max
Power Source	DC12V±10%,550mA
Dimension	∅ 94 x 69(H) mm
Weight	500g

Mode switch by OSD



Multi-function

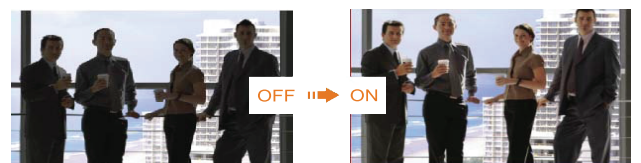
2D/3D-NR



Defog



DWDR



5MP 4 in 1 Sony Bullet Camera

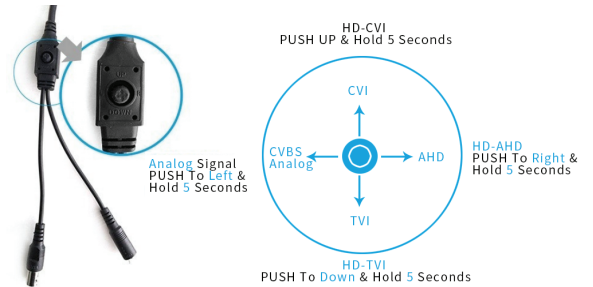
HD Analog Signal AHD, TVI, CVI, CVBS switch by OSD



Specifications

Model NO.	iHIRBFIO-5SN2
Video Output Mode	AHD/TVI/CVI 5M@25fps; CVBS 960H
Camera	
Image Sensor	SONY Starvis IMX335
Image Resolution	5.0 MP
Effective Pixels	5M:2592*1944
TV System	PAL/NTSC
Video Output Mode	AHD/TVI/CVI 5M@25fps; CVBS 960H
Electronic Shutter	1/25s~1/50,000s , 1/30s~1/60,000s
S/N Ratio	≥50dB
Scanning System	Progressive Scan
Lens	
Focus Length	Board Lens 3.6mm
Focus Control	Fixed
Lens Type	Fixed
Pixels	5M Pixels
Auto Iris Support	N/A
Night Vision	
Infrared LED	ϕ 28X6PCS
Infrared Distance	30M
IR Status	Under 10 Lux by CDS
IR Power On	CDS Auto Control
Camera Features	
Starlight	/
Day/Night	YES
OSD Menu Language	YES
White Balance	AUTO / MANUAL
Gain Control	AUTO
Noise Reduction	DNR
Picture TVjustment	YES
WDR	DWDR
OSD Support	YES
Dip Switch	N/A
General	
Waterproof	IP66
Dual Voltage	N/A
IR Cut Filter	YES
Heater	N/A
Audio	N/A
Operation Temperature	-10°C ~ +50°C RH95% Max
Storage Temperature	-20°C ~ +60°C RH95% Max
Power Source	DC 12V±10%, 550mA
Dimension	175(W) x 69(H) x 55(D)mm
Weight	600g

Mode switch by OSD



Multi-function

2D/3D-NR



Defog



DWDR

